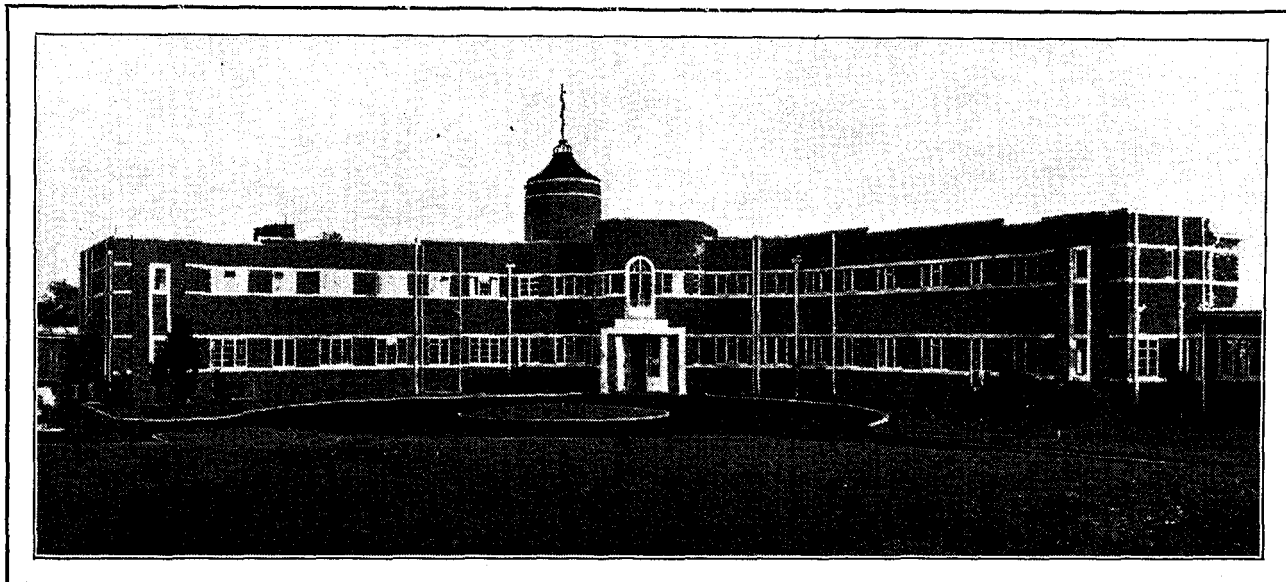


A MODEL COTTAGE HOSPITAL.

Thursday, 8th October, 1936, found the members of the British College of Nurses' Administration Class wending their way, in the mellow radiance of a lovely autumn

The whole of the ground floor is designed for the patients' accommodation, the number of beds being 38.

In the tour of the wards, it was most instructive to note that every possible modern appliance had been acquired for the convenience of the patients. The floors are polished



THE QUEEN VICTORIA COTTAGE HOSPITAL, EAST GRINSTEAD.

afternoon, across the beautiful recreation ground which led them to a track across the meadows.

Here came into view the welcome sight of the Queen Victoria Cottage Hospital, East Grinstead, standing high on the green uplands of East Grinstead, a stately landmark in its architectural simplicity and charm, visible for miles, and rising from the top of the Central Tower of the building is the remarkable snake-entwined staff, an emblem symbolical of Æsculapius, god of Healing.

The high road is reached by crossing a stile, and after a few minutes' walk the Hospital gateway is entered.

Passing along the drive, which leads to a circular forecourt, the main entrance is reached, where the members of the Class were warmly received by the Matron, Miss Garlett, who at once conducted them over the Hospital.

Passing from the main entrance to an inner hall, opening on one side to waiting room and on the other to the casualty dressing room, each with separate toilet arrangements, the centre corridor is reached from which there is access to all the wards, and off which an adjacent corridor also leads to the administrative rooms and kitchen quarters, which are connected directly with the ward corridor for service convenience.

Very striking is the general colour scheme of jade green Korkoid floors, with walls enamelled beige to pale cream. On the Korkoid flooring traffic becomes more or less silent.

hardwood; to facilitate cleaning the junctions between all floors and walls are rounded, and the doors of flush type.

The beds are placed parallel to the walls, this arrangement gives the patients the best aspect as they do not face

the light, and they thoroughly appreciate the charming outlook to the gardens and country beyond, seen from the extensive (Fittall) windows. This was commented upon to a male patient who remarked that this was by no means the only privilege enjoyed by the patients, the care and attention they received from the Nursing Staff was splendid and, as soon as our guide (Miss Garlett), was out of hearing, said: "As for the Matron, well! she is wonderful, we love to see her about and there is nothing she would not do for us. The sense of freedom we have here is remarkable, indeed it is not like being in hospital at all."

Each bed has its electric light, wireless headphones and electric bell attached. The bed furnishings, quilts and screen covers of pretty lido blue and white, the adaptable (Silverdal) screens were much admired and the Silderdal locker created quite a sensation for its unique design. It has three cupboards, one drawer, a tunnel and towel-rail attached

behind, the locker is on ball-bearing casters and can be reached from any angle. The chromium-plated automatic bed-pan cleansers, and heated bed-pan racks of the latest design are installed in the sluice room adjoining each ward.



MISS LEONORA GARLETT,
Matron.

[previous page](#)

[next page](#)